



Gamache Vineyards II LLC

Southwind - Basalt Block

Legal Description
 UMATILLA, OR
 T5N R35E section 10

LEGEND

■ Cabernet Sauvignon

ACRES

Cabernet Sauvignon	14.10
TOTAL	14.10

Provided Courtesy of:

Northwest
 FARM CREDIT SERVICES
 INSURANCE AGENCY

2735 Allen Road | Sunnyside, WA 98944
 000.497.2767 | 509.036.3005 fax



Gamache Vineyards II LLC

Southwind - Fractured Basalt

Legal Description
 UMATILLA, OR
 T5N R35E section 10

LEGEND

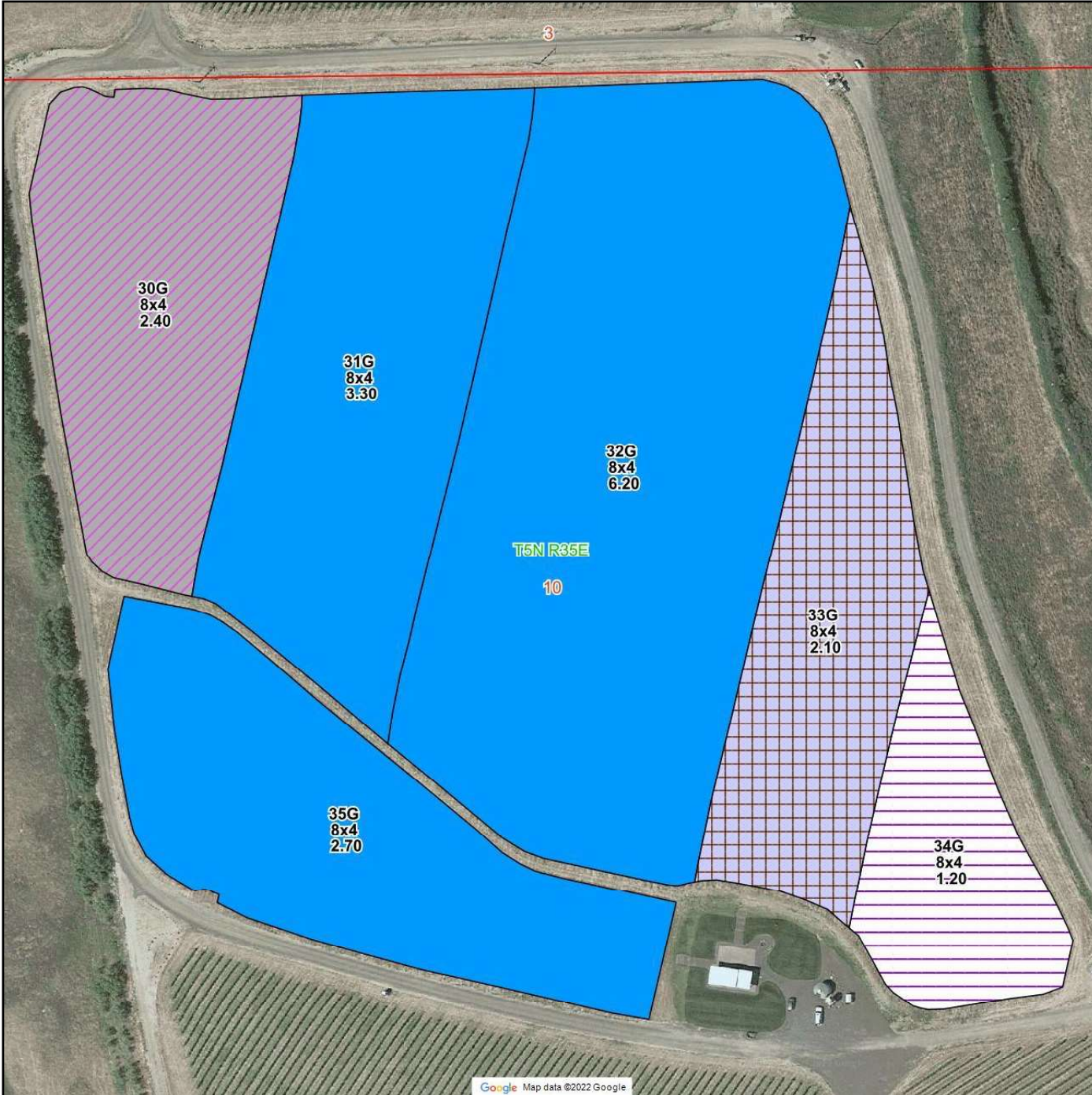
- Cabernet Sauvignon
- Malbec
- Syrah

ACRES

Cabernet Sauvignon	3.60
Malbec	4.80
Syrah	4.30
TOTAL	12.70

Provided Courtesy of:




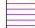
Northwest
 FARM CREDIT SERVICES
 INSURANCE AGENCY
 2735 Allen Road | Sunnyside, WA 98944
 000.497.2767 | 509.036.3005 fax



Gamache Vineyards II LLC Southwind - Glasshouse

Legal Description
UMATILLA, OR
T5N R35E section 10

LEGEND

-  Cabernet Franc
-  Cabernet Sauvignon
-  Malbec
-  Merlot

ACRES

Cabernet Franc	2.10
Cabernet Sauvignon	12.20
Malbec	2.40
Merlot	1.20
TOTAL	17.90

Provided Courtesy of:



2735 Allen Road | Sunnyside, WA 98944
000.497.2767 | 509.036.3005 fax

Gamache Vineyards II LLC

Southwind - Rootstock

Legal Description
 UMATILLA, OR
 T5N R35E section 3

LEGEND

-  Cabernet Franc
-  Cabernet Sauvignon
-  Merlot
-  Petit Verdot
-  Syrah
-  Viognier

ACRES

Cabernet Franc	1.30
Cabernet Sauvignon	10.20
Merlot	4.60
Petit Verdot	2.30
Syrah	3.60
Viognier	1.60
TOTAL	23.60

Provided Courtesy of:



2735 Allen Road | Sunnyside, WA 98944
 000.497.2767 | 509.036.3005 fax



Google Map data ©2022 Google